

MUTOH



VerteLith



Genuine RIP Software Achieves Unmatched Image Quality and Workflow Efficiency

High Quality Technology to optimize
the performance of MUTOH printers

Scan here for details



MUTOH Clear Tone Original half tone technology

Less variation in color density
and smoother gradations



Better
skin tones

MUTOH Clear Tone

MUTOH CMYK Wide color gamut profile

Wide color gamut input profiles
"MUTOH CMYK" and "MUTOH CMYK
Expanded(orange ink compatible)" for
vivid color expression



MUTOH
CMYK

U.S. Web Coated



MUTOH
CMYK
Expanded

U.S. Web Coated

Accurately process PDF transparencies

More reliable output by accurate process-
ing of PDF transparencies & drop shadows



VerteLith
processing

Improper
processing

Two Preview Functions
to reduce mistakes and waste

Scan here for details



RIP preview

Preview "the actual printing dots" on screen before printing



Even
the variable dots
are previewed
for
confirmation

Soft proof

Simulate "the color" of the printed image
on screen before printing



Workflow Efficiency

Scan here for details



Automated layout processing and printing with Multi-page PDF

Prepare an integrated multi-job PDF. In addition to "Print settings", "Layout settings" can be also set in the hot folders



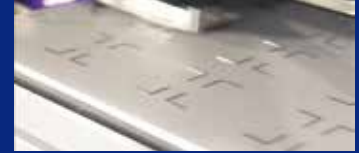
Jig layout function

Set the layout information including placement information



Simplified jig production with 2.5D printing

Save time and money with MUTOH's automated Jig production



Efficient Multi-Layer Printing

Scan here for details



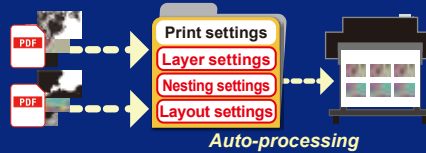
Automated multi-layer printing with Multi-page PDF

Pre-set multi-layer print settings. Prepare a PDF with layers divided into pages. In addition to "Print settings" and "Layout settings", "Layer settings" can be also set in the hot folders



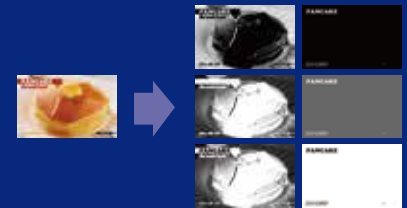
Auto-nesting, layout and printing for multiple jobs with multi-layers

For multiple jobs with multi-layers, automated processing can be performed once a series of processing such as print settings, layer settings, nesting settings



Auto-generation of spot colors

Auto-generation of spot colors based on the shading of the image data. Select from 6 different modes



Operating environment

OS	Windows11, ⁵ Windows 10 [64bit] , Windows 8.1 [64bit]
CPU	Intel® Core™ i5 3GHz or better
Memory	8GB or more
Hard Disk	HDD or SSD SSD is recommended when output to multiple machines 10GB or more ^{*1}
Interface	Ethernet ^{*2} USB 2.0 ^{*3}
Display resolution	1920×1080 pixel or higher ^{*4}

- *1 When using the archive function, secure sufficient capacity.
- *2 It is recommended to have a network port that supports Gigabit Ethernet, which is required when connecting to a printer equipped with Gigabit Ethernet.
- *3 Recommended when using a USB-connected cutter and a spectrophotometer.
- *4 For soft proofing, a display with monitor calibration is recommended.
- *5 The guaranteed operating environment is Windows 11 21H2 build 22000 or later.

The following major models are scheduled to be supported in succession.

Please contact your dealer for the detailed schedule.

Printer

XPJ-1462UF,XPJ-461UF/661UF,XPJ-1341SR-P, XPJ-1641SR-P/1682SR-P,XPJ-1641SR/1682SR, VJ-628/1324X/1638X/1938X/2638X,VJ-1638UH/1638UR, VJ-1638UH MarkII/1638UR MarkII, VJ-628MP,VJ-1628MH

Cutter

ValueCut II VC2-600, VC2-1300, VC2-1800
ValueCut VC-600, VC-1300, VC-1800
Graphtec CE7000 Series, FC9000 Series
SUMMA Summa Cut / Summa Sign / S one / S Class 2 Each Series

Supported data PDF1.7/2.0, PostScript, EPS, TIFF, JPEG, PNG

<http://www.mutoh.co.jp/en/>

MUTOH
MUTOH INDUSTRIES LTD.

TEL:+81-3-6758-7020
FAX:+81-3-6758-7021
E-mail: ibd@mutoh.co.jp



Safety Precautions

Before the use of our products, please read the entire Operations Manual to ensure safe operations.

The name of company and products mentioned are trademarks or registered trademarks. The standard prices in the catalog include no sales taxes, which must be individually determined. Specifications and outward appearances of any product therein may be changed without notice as a result of product improvement or other related reasons.

Distributed by:

