



# XpertJet

## 1682SR / 1641SR

Eco Solvent Printers

## Built for Professionals

The "XpertJet 1682SR/1641SR" are high-quality and high-production eco-solvent printers. The platform of "XpertJet" series provides improved usability and reduces operational workload which ensures high-quality prints, high productivity, and user-friendly operation. The XpertJet 1682SR, a high-speed eco-solvent printer with dual print heads, provides smooth gradation and high productivity with supporting light inks. It also supports orange ink for rich expression and vivid color development. The XpertJet 1641SR is a 4 color (CMYK), single head model that offers an excellent balance of performance, image quality and an affordable price range. The MS41 eco-solvent ink paired with the printers excels in color development, weather resistance, and ease of maintenance. The ink has been certified UL GREENGUARD Gold, making it environmentally and operator friendly. The XpertJet 1682SR/1641SR bring the best "Made in Japan Quality" to the various markets such as banners, trade show graphics, indoor and outdoor signs, POP displays, vehicle wrap and more.

Outdoor sign



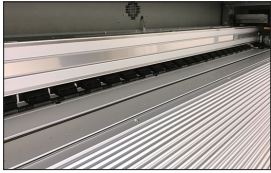
Vehicle wrap



Banner



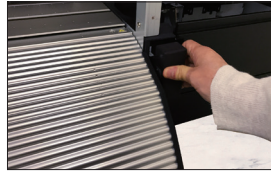
# Pursue the ease of use for professionals



High Precision Aluminum Rail Mechanism



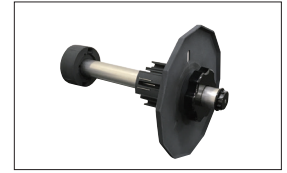
Internal LED lighting



Multi-stage pressurizing mechanism



LED touch panel



New media feed flange

# MUTOH's unique technologies for automation and efficiency



## Automatic Bi-D adjustment "DropMaster 2"

A built-in sensor on the carriage automatically calibrates bi-directional alignments, and saves time and reduces validation in adjustment among different operators.



## Automatic media feed adjustment "Feed Master"

By printing a print pattern and reading it with a sensor, paper feed correction is performed automatically.



## Nozzle selection function "Nozzle Area Select"

Nozzle area select temporarily prints using selected areas of active nozzles when clogged nozzles fail to recover. It is a reliable function that ensures seamless operations.



## Media roll balance management "Media Tracker"

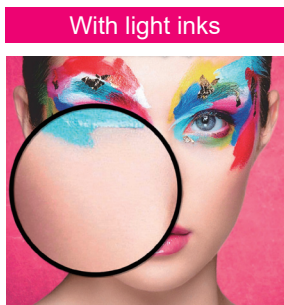
Media tracker manages the remaining media by printing barcodes before removing roll in use. It will read the barcode when reloading that roll. Streamlines management of remaining capacity for multiple media.

# Printing expression with "BEAUTY" and "IMPACT" <8C configuration with XPJ-1682SR>

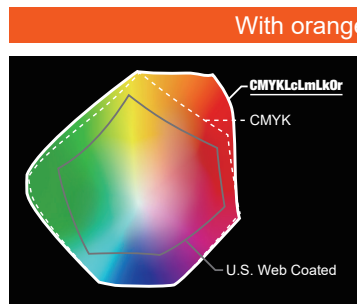
The XPJ-1682SR is available in 7-color configuration (CMYK + light inks) and 8-color configuration (CMYK+light inks+orange ink). The combination of the 8-color configuration with orange ink and the "MUTOH CMYK Expanded", orange-compatible wide gamut profile, included in VerteLith ver.3, significantly expands the yellow to magenta color gamut with a focus on the orange region. The "natural and smooth gradation" of the light inks and the "rich expression" and "vivid color development" of the warm colors enhanced by the orange ink delivers printing with "beauty" and "impact" that is ideal for Sign & Graphics.



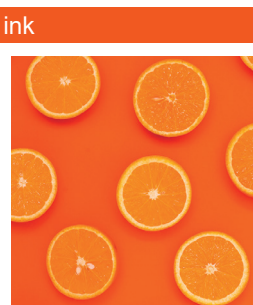
UL GREENGUARD Gold Certification



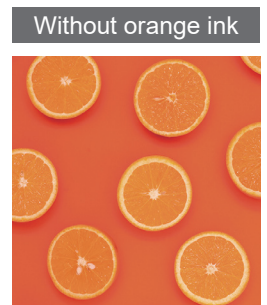
"Natural and smooth gradation" with less graininess



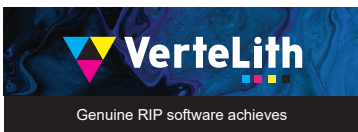
Enhance warm color Expanded the color reproduction area, resulting in "rich expression"



Clearer and "more vivid colors"



# Genuine RIP software "VerteLith" <optional>



- "High quality printing technology" to optimize the performance of MUTOH printers
- "Two preview functions" to reduce mistakes and waste
- Workflow efficiency



"MUTOH clear tone" original halftone technology delivers less variation in color density and smoother gradations

XpertJet		XPJ-1682SR	XPJ-1641SR
Print head	Print method	On-demand piezo drive system	
	Head Height	Three-level adjustment of Low 1.5mm, Mid: 2.5mm, and High 4.0mm	
	Number	2 staggered	1
Media	Width	Maximum: 1625mm Minimum: 500mm	
	Max. thickness	Low:0.3mm Mid:1.3mm High:2.8mm	
	Diameter	Φ150 mm or less	
	Tube diameter	2 inches or 3 inches	
	Weight	30 kg or less	
Maximum printable width		1,615mm	
Maximum print length		1,500m	
Ink	Type	Eco-solvent ink	
	Color	4-color(K·C·M·Y) 7-color(K·C·M·Y·Lk·Lc·Lm) 8-color(K·C·M·Y·Lk·Lc·Lm·Or)	4-color(K·C·M·Y)
	Amount	300ml/1000ml ink bag *orange ink is only available in 300ml.	

XpertJet		XPJ-1682SR	XPJ-1641SR
Print resolution		Maximum 1440dpi	
Interface		Gb-Ethernet(1000BASE-T)	Ethernet(10BASE-T, 100BASE-TX)
Power supply	Printer	Voltage:AC 100V~120V ±10% / AC 200V~240V ±10% Frequency:50/60Hz ±1Hz	
	Heate	Voltage:AC 100V~120V ±10% / AC 200V~240V ±10% Frequency:50/60Hz ±1Hz	
Environmental condition	Printer Operation	Temperature:20° C~32° C Humidity:40%~60% No condensation	
	Accuracy Guaranteed	Temperature:22° C~30° C Humidity:40%~60% No condensation	
Power consumption	Operation	AC100V-120V±10% / AC200V-240V±10% 1100W or below	
	Sleep Mode	AC100V-120V±10% / AC200V-240V±10% 30W or below	
External dimensions (W)×(D)×(H)		body:2770mm×895mm×1428mm(cover closed),1611mm) /1527mm(cover opened )/(when installing ink bag cases:1611mm)	
Weight		Main body: 146kg Stand: 32kg	Main body: 142kg Stand: 32kg
RIP software		VerteLith (MUTOH genuine RIP software), FlexiSIGN & PRINT MUTOH Edition, ONYX	